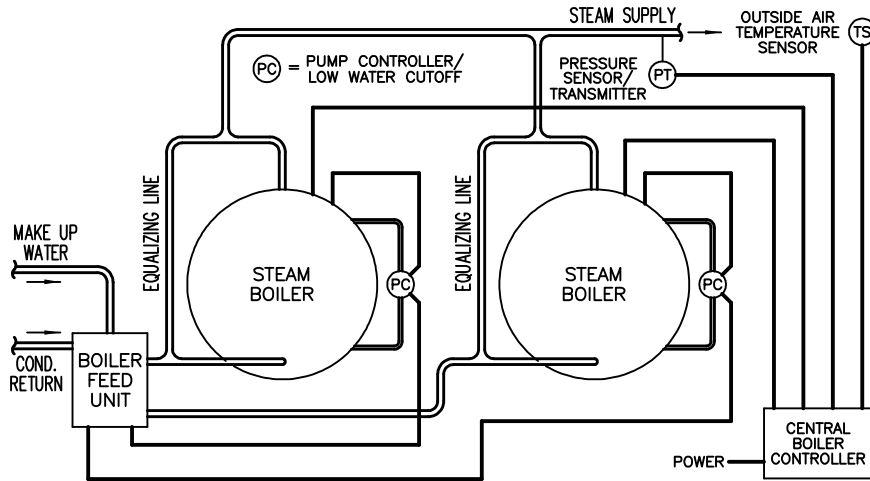


**Figure 16.4** Primary/secondary chilled water pumping system. Central controller takes on all facets of system operation. Temperature sensors (TS) monitor temperatures at key points in the system, and report back to the controller. Differential pressure sensor/transmitter (PT) conveys demand information, and flow switches (WF) indicate decoupler flow direction.



**Figure 17.4** Two boilers serving a common steam system, controlled by an outboard central boiler controller.